



FIG A



FIG B



FIG C



FIG D



FIG E



FIG F



FIG G



FIG H



FIG I

FOR MITSUNISHI

GMB No .	FIG	ORIGINAL No .	Dm/m	Om/m	Lm/m	N/W g	G/W g
GUM-71	H	14501-27000	44	-	129	2500	2900
GUM-72	A	13518-22000	37	-	104	1000	1000
GUM-73	A	GPW18397	27	-	81.75	480	540
GUM-75	A	MB000154	31.8	-	102	940	1000
GUM-76	A	13018-21200	25.01	-	77.8	500	570
GUM-77	A	ST-0008	27	-	65.3	470	540
GUM-78	A	ST-0003	25	-	63.8	275	340
GUM-79	A	ST-0024	25.02	-	63.8	275	340
GUM-80	H	12018-01110	46	-	142	2300	2650
GUM-81	A	MB000345	25	-	63.8	275	340
GUM-82	A	13501-11010	38	-	104	1320	1500
GUM-83	H	12017-1000	52	-	154	3950	4300
GUM-84	A	18433-51700	26	-	68	310	380
GUM-85	A	MB000300	22.06	-	64.4	250	320
GUM-86	A	MT047756	28.52	-	77.7	500	570
GUM-87	A	MB000119	30	-	78	560	620
GUM-88	A	MB000776	25	-	76.5	405	450
GUM-89	A		22.06	-	67.5		
GUM-90	H	14801-06001	46	-	148	2300	2650
GUM-91	A	MB000948	25	-	76.8	500	570
GUM-92	A	MB000697	20.02	-	55	180	230
GUM-93	B	MB000267	30	55.1	-	600	650
GUM-94	A	MC999961	40	-	112	1500	1600
GUM-95	B	64371-10900	22	37.3	-	200	270
GUM-96	A	MC998476	52	-	170	4500	4850
GUM-97	A		44		131	2440	2500
GUM-99	A	Mc998680	44		129	1550	1580

FOR TOYOTA

GMB No .	FIG	ORIGINAL NO.	Dm/m	Om/m	Lm/m	N/W g	G/W g
GUT-11	A	04371-10011	20	-	57	180	250
GUT-12	B	04371-30011	26	53.35		410	480
GUT-13	B	04371-20010	26	42		380	450
GUT-14	A	04371-60010	28.5	-	78	515	590
GUT-15	A	04371-55011	34	-	107	960	1120
GUT-16	H	04371-55020	40	-	118	1800	2080
GUT-17	B	04371-30020	29	49		515	590
GUT-19	A	04371-10010	20	-	57	180	250
GUT-20	B	04371-36021	32	61		670	760
GUT-21	B	04371-35020	29	49		515	590
GUT-22	H	04371-55021	40	-	118	1850	2150
GUT-23	B	04371-35030	29	49		515	590
GUT-24	A	04371-13020	22.06	-	57.5	230	280
GUT-25	A	04371-04010	27	-	81.8	515	590
GUT-26	F		28.57	-	107.82	1350	1500
GUT-27	B		28.57	49		500	550

FOR NISSAN

GMB NO.	FIG	ORIGINAL NO.	Dm/m	Om/m	Lm/m	N/W g	G/W g
GUN-25	B	37125-01J25	32	64		700	800
GUN-26	A	37125-11975	23.82	-	61.3	275	340
GUN-27	B	37125-14627	25	40		275	340
GUN-28	B	37125-18025	20.01	35		180	250
GUN-29	B	39625-21025	28.02	53		490	560
GUN-30	A	37125-85461	30.188	-	92.08	670	770
GUN-31	H	37125-50001	32	-	107	1010	1130
GUN-32	A	37125-58026	35.5	-	119.2	1320	1450
GUN-33	A	37125-99901	43	-	128	1400	1570
GUN-34	B	37125-76025	25.01	52		350	420
GUN-35	B		32.02	-	91.8	840	920
GUN-36	A	37125-4101 (6510)	25	-	77.6	500	570
GUN-38	B	37125-68200	26	45.6		350	480
GUN-41	H	37125-90128	43	-	135.5	2350	2600
GUN-42	H	37125-99900	40.01	-	123.8	1555	1750
GUN-43	H	37125-90027	55.01	-	163.8	3950	4150
GUN-44	A	48155-99000	20.5	-	56.6	195	290
GUN-45	A	37125-H8500	20.07	-	52.4	200	240
GUN-46	B	37125-01G25	27	46.1		430	500
GUN-47	A	37125-25025	27	-	81.75	480	530
GUN-48	A	37125-7F025	27	-	81.75	480	530
GUN-49	A		18	-	47	200	240

FOR ISUZU

GMB NO.	FIG	ORIGINAL NO.	Dm/m	Om/m	Lm/m	N/W g	G/W g
GUIS-51	A	9-37300-017	23.82	-	61.3	285	350
GUIS-52	B	9-37300-065	29	50		500	570
GUIS-54	H	9-37300-055	36	-	97	1260	1360
GUIS-55	H	9-37300-150	42	-	125	1520	1810
GUIS-56	A	9-37300-609	23.82	-	61.3	285	350
GUIS-57	H	9-37300-163	48	-	145	2500	2700
GUIS-58	H	9-37300-112	36	-	97	1290	1390
GUIS-59	A	44135-060	20.5	-	56.6	195	290
GUIS-60	G	9-37300-139-0	49.2	-	148.38	3100	3400
GUIS-61	A	9-37300-031	23.82	-	61.3	285	350
GUIS-62	A	1-37300-013-0	35	-	103.92	1100	1320
GUIS-63	A	9-42072-321-0	22.06	-	59.6	230	280
GUIS-64	A	1-37300-047-0	40	-	115	1500	1700
GUIS-65	H	1-37300-004-0	45.98	-	136	2200	2600
GUIS-66	A	5-37300-032-0	33	-	93	800	910
GUIS-67	G	1-37300-049-0	56	-	173.9	3850	4250
GUIS-68	H	1-37300-082-0	50	-	155	3700	4100
GUIS-69	A	8-97020-279-0	27	-	81.75	480	540
GUIS-70	B	8-97080-897-0	29	49		500	550
GUIS-71	B	8-97180-697-0	29	49		500	550
GUIS-72	A		42	-	115	1600	1800

FOR MAZDA

GMB No.	FIG	ORIGINAL No.	Dm/m	Om/m	Lm/m	N/W g	G/W g
GUMZ-1	A	0136-25-060	25	-	63.8	275	340
GUMZ-2	A	0180-25-060	22.02	-	55	180	230
GUMZ-3/4	B	0164-25-060	32	57		500	570
GUMZ-6	B	0706-89-251	28	55.8		800	910
GUMZ-7	B	0259-25-060	25	41.2		280	350
GUMZ-8	B	0727-25-060	37	67		1230	1410
GUMZ-9	B	1757-89-251	26.5	48		420	500
GUMZ-10	B	3919-89-251	22.5	35		240	310
GUMZ-11	A	M026-25-100	22.06	-	59.6	230	280
GUMZ-12	A	P001-25-060	24.06	-	71.6	260	330

FOR HINO

GMB No.	FIG	ORIGINAL No.	Dm/m	Om/m	Lm/m	N/W g	G/W g
GUH-03	A	44330-538-004	22	-	65	240	300
GUH-60	A	37401-1172	40.2	-	115	1500	1250
GUH-61	H	9-953-3401-01	47	-	124	2000	2250
GUH-62	H	3-302-3403-01	47	-	138	2200	2400
GUH-63	A	3-331-3403-01	35.01	-	99	1260	1360
GUH-64	H	3-302-3403-01	50	-	159	3150	3400
GUH-65	A	3-445-3403-04	36.6	-	110.5	1250	1450
GUH-66	A	6041-8409-00	23.82	-	65.95	295	380
GUH-67	G	3301-3403-01	49.2	-	148.38	3100	3400
GUH-68	H	04037-4008	47	-	144	2300	2500
GUH-69	A	45220-1060	20	-	58	200	250
GUH-70	H	37401-1061	47	-	138	2200	2400
GUH-71	H	37401-1010	47	-	144	2300	2500
GUH-72	H	37401-1080	47	-	144	2300	2500
GUH-73	H	37401-1021	50	-	165	3300	3650
GUH-74	A	37401-1100	36	-	115	1100	1500
GUH-75	H	37401-1180	58.03	-	175	4600	5600
GUH-76	H	37401-1220	44	-	125.5	2000	2200

FOR DAIHATSU

GMB No.	FIG	ORIGINAL No.	Dm/m	Om/m	Lm/m	N/W g	G/W g
GUD-81	A	4141-4120	20.02	-	55	180	250
GUD-82	A	4610-4120	28	-	80	510	580
GUD-83	A	4123-4120	25	-	63.8	275	340
GUD-84	A	04371-87301	28	-	80	500	590
GUD-85	B	04371-87302	28.57	60.1		610	720
GUD-86	A	04371-87510	20.02	-	55.1	180	230
GUD-87	A	04371-87303	28	-	80	500	590
GUD-88	B	04371-87503	22.5	34.9		240	310
GUD-89	B	04371-87304	30	55		600	650

FOR SUZUKI

GMB No.	FIG	ORIGINAL No.	Dm/m	Om/m	Lm/m	N/W g	G/W g
GUS-1	B	27200-58833	25	40.4		275	340
GUS-2	B	27100-67000	20.01	35		180	250
GUS-6	A	27200-60511	20.07	-	59.8	200	240
GUS-7	A	27200-83810	25	-	63.99	275	345

FOR SUBARU

GMB No.	FIG	ORIGINAL No.	Dm/m	Om/m	Lm/m	N/W g	G/W g
GUSR-2	B	6234-00020	23	44.6		280	350
GUSR-3	B	6232-43000	28	52.6		470	570
GUSR-4	B	6220-32000	25.1	40		300	360

FOR HONDA

GMB No.	FIG	ORIGINAL No.	Dm/m	Om/m	Lm/m	N/W g	G/W g
HUHO-2	A	40150-567-003	25	-	64	280	345
HUHO-3	A	44330-538-004	22	-	65	240	305

OTHERS

GMB No.	FIG	ORIGINAL No.	Dm/m	Om/m	Lm/m	N/W g	G/W g
GUDUMP-1	A	KAWANISHI(S)	20	-	57.5	180	250
GUDUMP-2	A	KAWANISHI(L)	25	-	77.	300	370
GUDUMO-3	A	KONGO	22	-	62	270	340

FOR STEERING JOINT

GMB No.	FIG	ORIGINAL No.	Dm/m	Om/m	Lm/m	N/W g	G/W g
ST-1538	A		15	-	38	75	80
ST-1540	A		15	-	40	75	85
ST-1638	A		16	-	38	80	90
ST-1640	A		16	-	40	80	95
ST-1948	A		19	-	48	110	140

FOR KOMATSU

GMB No.	FIG	ORIGINAL No.	CtoC/Dm/m	Om/m	Lm/m	N/W g	G/W g
GUKO-1	G	101-10-17100	33.32	-	79.22	580	660
GUKO-2	G	101-10-17200	33.32	-	79.22	580	630
GUKO-3	G	101-10-00042	33.32	-	79.22	580	660
GUKO-4	G	111-10-16110	36.4	-	107.98	1260	1340
GUKO-5	G	131-10-46110	42.88	-	115.05	1960	2040
GUKO-6	G	135-14-00030	42.88	-	140.45	2390	2490
GUKO-7	F	150-11-12360	50/40	163.2	208	4410	4500
GUKO-8	G	175-20-00060	71.44	-	165.1	6200	6300
GUKO-9	F		50/35	184	144.4	2900	3000
GUKO-10	G	141-10-00012	50/35	185	148.38	2900	3000
GUKO-11	G	150-11-00097	50/40	169	208	4400	4500
GUKO-12	G	111-50-11110	33.32	-	79.22	580	660
GUKO-13	A	154-66-12100	33.82	-	61.3	275	330
GUKO-14	G	380-135764-1	51	-	208	4900	5000
GUKO-15	G	380-136142-1	49.2	-	148.38	3500	3600
GUKO-16	A	380-154073-1	38.91	-	109.4	1350	1500
GUKO-17	A	380-154081-1	30.18	-	92.05	680	780
GUKO-18	G	380-890373-1	42.88	-	115.05	1900	2000
GUKO-19	G	381-881908-1	42.88	-	115.05	1900	2000
GUKO-20	G	381-972625-1	36.4	-	107.98	1240	1340
GUKO-21	G	381-976907-1	42.88	-	140.45	2400	2500
GUKO-22	G	381-976908-1	42.88	-	140.45	2400	2500
GUKO-23	G	381-985204-1	36.4	-	107.98	1260	1340
GUKO-24		385-10155511		-			
GUKO-25	G	385-10178551	36.4	-	107.98	1260	1340
GUKO-26	G	385-10178571	42.88	-	140.45	2400	2500
GUKO-27	G	385-1019741	49.2	-	148.38	3500	3600
GUKO-28	G	385-10238601	42.88	-	140.45	2400	2500
GUKO-29	G		42.88/33.33	104.25	140.45	1980	2080
GUKO-30	G		42.88/32	83.89	115.05	1550	1650

FOR RUSSIA EVHICLES

ITEM	ORIGINAL No.	FIG	Dm/m	Lm/m	APPLICABILITY
01	2101-2202025	A	23.82	61.2	VAZ-2101-2107,LADA
02	21050-2202025-01	A	23.8	61.3	VAZ-2101-2107
03	21211-2202025	A	28	71	VAZ - 21213(NIVA)
04	2121-2202025-01	A	28	71	VAZ - 2121(NIVA)
05	408-2201025	B	28	(45)73	MOSKVICH 408
06	412-2201025-00	B	28	(55)83	MOSKVICH 412
07	4301-2201025A	A	39	118	ZIL-130
08	255B-2201025	A	50	155	KAMAZ
09	4301-3401485	A	19	44	GAZEL
10	5320-2205025	A	50	135	KAMAZ
11	4301-2201025A-1	A	39	118	KAMAZ
12	5320-3422039	A	28	68	KAMAZ
13	53A-2201025	A	35	98	GAZ-53
14	31029-2201025	B	30	(55)88	VOLGA, GAZEL, UAZ
15	700-2201080	A	62	173	K-700
16	69-2201025	B	30	(55)88	VOLGA, GAZEL, UAZ

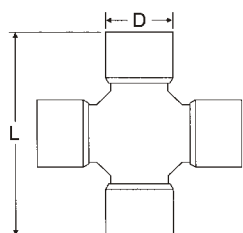


FIG1

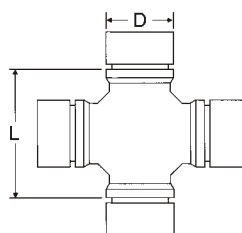


FIG2

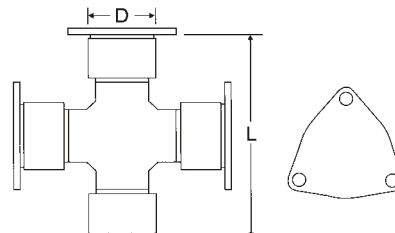
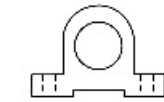
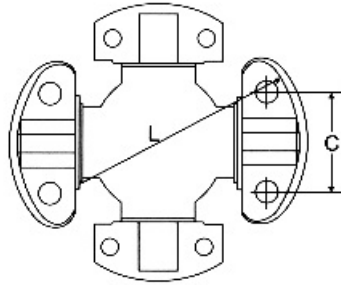


FIG3 (with loose plates)

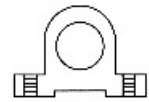
FOR DAF

ITEM	FIG	Dm/m	Lm/m	GKN No.	ORIGINAL NO.
01	1	30.188	106.35	HS179	608921
02	1	35	96.8	HS222	542635
03	1	38	105.8	HS236	314151,314851
04	1	39.675	115.42	HS176	316340
05	1	42	104.5	609057	609057
06	1	44	124.8	HS256	302155,1402644
07	1	47	130.9	HS266	586969,106829
08	1	48	116.4	HS271	507539,609866
09	1	50	131	HS278	178185
10	3	50	152.6	HS381	311267,605804
11	1	52.1	133	HS282	264354
12	1	55	164	HS286	586992
13	1	57.07	144	Hs288	505698,75873606

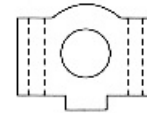
U-JOINT WITH 4 WING BEARINGS



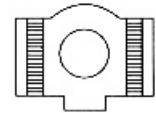
LWD-Low wing Drilled



LWT-Low wing Threaded



HWD-High wing Drilled

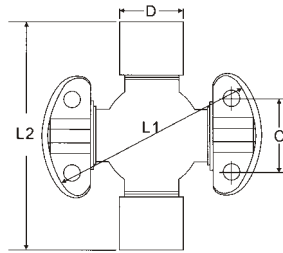


HWT-High wing Threaded

FOR CATERPILLAR

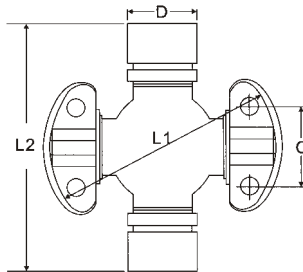
ITEM	FIG	Cm/m	Lm/m	SER.	BEARING TYPE	CATERPOLLAR	PRECISION NO.	SPICER NO.
01	G	33.34	79	2C	4LWT	6S6902	951	5-2002X
02	G	33.34	79	2C	4LWD	316117	994	5-2117X
03	G	33.34	79	2C	2LWT, 2LWD	6S6902	952	5-2116X
04	G	36.5	90.4	3C	4LWT	5D9153	536	5-3000X
05	G	36.5	90.4					
06	G	36.5	90.4	3C	2LWT, 2LWD	9K1976	535	5-3014X
07	G	36.5	90.4				966	
08	G	36.5	108	4C	4LWT	6H7160	540	5-4002X
09	G	36.5	108	4C	4HWD	6K0316	969	5-4143X
10	G	36.5	108	4C	2LWT, 2HWD	5M0800	939	5-4140X
11	G	36.5	108	4C	2LWT, 2LWD	6H1262	541	5-4123X
12	G	42.88	115.6	5C	4LWT	7J5251	550	5-5000X
13	G	42.88	115.6	5C	4HWD	2K3631,8Y0809,8D0537	968	5-5177X
14	G	42.88	115.6	5C	2LWT, 2LWD	7J5245	552	5-5121X
15	G	42.88	115.6	5C	2LWT, 2HWD		933	5-5173X
16	G	49.22	130				486	
17	G	49.22	134.8		2LWT, 2HWD		896	5-5802X
18	G	42.88	140.45	6C	4LWT		560	5-6000X
19	G	42.7	140.2	6C	4HWD	1S9670	905	5-6106X
20	G	42.88	140.45	6C	2LWT, 2HWD	686690	563	5-6102X
21	G	42.88/49.22	140.45/148.4				568	5-6108X
22	G	42.88/49.22	140.45/148.4				569	5-6109X
23	G	42.88/49.22	140.45/148.4				493	
24	G	49.2	148.4	7C	4LWT	8F7719,641152	570	5-7000X
25	G	49.2	148.4	7C	2LWT, 2HWD	2H0858,6H2577	927	5-7105X
26	G	49.2	148.4	7C	2LWT, 2LWD	7J5242	574	5-7202X
27	G	49.2	206.3	8C	4LWT	XX7146	581	5-8200X
28	G	49.2	206.3	8C	4HWD		584	5-8203X
29	G	49.2	206.3	8C	4HWD	6H2579,5H2308	928	5-8105X
30	G	49.2	206.3	8C	2LWT, 2LWD		1852	5-8201X
31	G	49.2	206.3	8C	2LWT, 2HWD		783	5-8202X
32	G	60.1	195					
33	G	71.8	165	8.5C	4HWD	7K0442	785	5-8500X
34	G	71.8	165		4HWD	2V7153,2T0096	963	5-8516X
35	G	71.4	165		2LWT, 2HWD	GUR79	950	5-8515X
36	G	71.44	209.51	9C	4LWT	9H9491	793	5-9000X
37	G	71.4	209.62		4HWD	9V7710,8D3144	911	5-9016X
38	G	71.44	209.61	9C	2LWT, 2HWD		792	5-9002X
39	G	56	174					GUIS67

U-JOINT WITH 2 WING TYPE AND 2 PLAIN ROUND BEARINGS



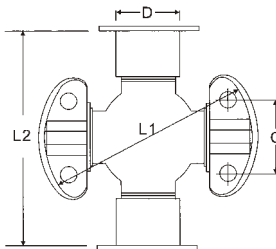
ITEM	Cm/m	Dm/m	L1m/m	L2m/m	SPICER	PRECISION
01	36.5	30.183	107.9	106.29	5-345X	
02	42.8	34.9	115	126.2	5-348X	
03	42.8	34.92	140.4	126	5-221X	470
04	49.2	34.92	134.8	126.22	5-329X	
05	49.2	41.2	148.2	142	5-330X	
06	42.8	34.93	140.3	126.1	5-303X	
07	42.8	34.93	140.4	126.2		
08	42.8	33.85	115	79.2		
09	42.8	32.8	115	79.21		
10	42.8	34.92	115.06	106.28		
11	49.2	41	148.4	140.5		
12	49.2	41.275	148.4	104.5		

U-JOINT WITH 2 WING TYPE AND 2 GROOVED ROUND BEARINGS



ITEM	Cm/m	Dm/m	L1m/m	L2m/m	SPICER	PRECISION
14	33.34	25.4	79	54.5	5-2033X	522
15	33.34	25.4	79.22	55.2	5-2031X	508
16	36.5	28.5	108	77.6	5-4016X	546
17	36.5	28.6	90.4	60.2	5-3012X	
18	42.8	33.35	115	79.2	5-5015X	557
19	42.8	33.35	140.45	104.2		565
20	49.2	41.275	148.4	104.4		

U-JOINT WITH 2 WING TYPE AND 2 WELDED PLATE BEARINGS



ITEM	Cm/m	Dm/m	L1m/m	L2m/m	SPICER	PRECISION
21	71.4	49.195	209.3	191.98	5-324X	480
22	71.4	55.5	209.3	206	5-326X	

U - JOINT WITH 4 THRUST PLATE BEARINGS

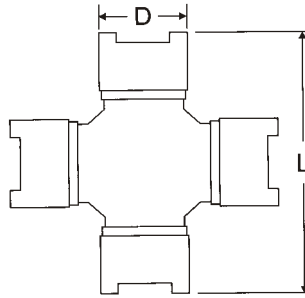


FIG A

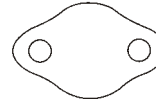
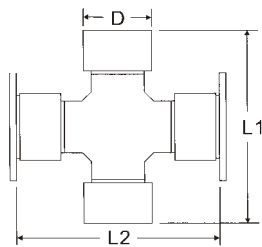


FIG B

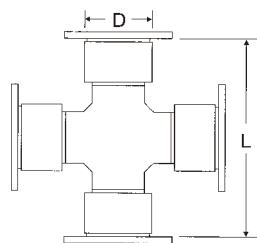
ITEM	Fig	D	L	Lube	GMB	GKN
TS32107	A	32	107	A	GUN31	
TS3697	A	36	97	A	GUIS58	HS307
TS42125	A	42	125	M	GUIS55	HS310
TS43136	A	43	136	M	GUN41	
TS44139	A	44	129	M	GUM71	HS312
TS46136	A	45.98	136	M	GUIS65	
TS46142	A	46	142	M	GUM80	HS313
TS46148	A	46	148	M	GUM90	
TS47144	A	47	144	M	GUH72	
TS48145	A	48	145	M	GUIS57	
TSTS50165	A	50	165	M	GUH73	
TS52154	A	52	153.8	M	GUM83	
TS55164	A	55	164	M	GUN43	HS346

ITEM	Fig	D	L	Lube	GMB	GKN
T43128	B	43	128	M	GUN33	
T47124	B	47	124	M	GUH61	HS314
T47138	B	47	138	M	GUH62	HS315
T48135	B	47.62	134.9	A	GU4000	HS316
T49154	B	49.195	154.76	A	GU5000	HS317
T50159	B	50	159	A	GUH64	HS320



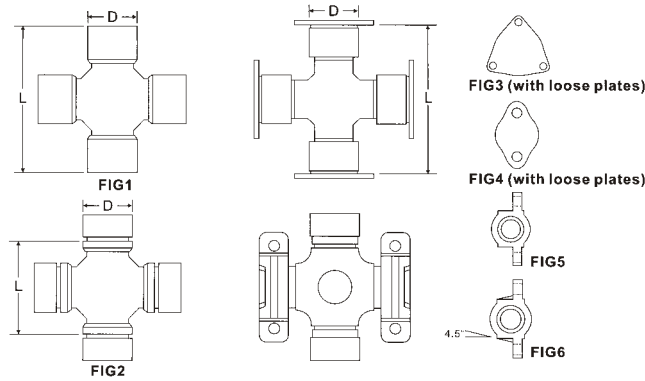
U - JOINT WITH 2 WELDED PLATE AND 2 PLAIN ROUND BEARINGS

ITEM	D	L1	L2	Lube	SPICER	PRECISION
WP48135	47.618	135	135	2A	5-438X,5-674X	475
WP49155	49.2	154.8	157.1	2A	5-515X,5-675X	476
WP49178	49.195	177.98	179.98	2A	5-469X,5-677X	477
WP49192	49.195	194	194	2A	5-510X,5-676X	478



U - JOINT WITH 2 WELDED PLATE AND 2 PLAIN ROUND BEARINGS

ITEM	D	L	Lube	SPICER	PRECISION
W39116	39.675	115.98	A	5-115X	332
W48135	47.618	134.85	A	5-297X	333
W49155	49.195	154.855	2A	5-280X	334
W49178	49.195	177.93	2A	5-407X	376
W49192	49.195	191.86	2A	5-281X	381
W55206	55.5	206	2A	5-308X	388
W59167	58.979	167.58	2A	5-124X	335



FOR MERCEDES

LIQUN No.	FIG	Dm/m	Lm/m	GKN NO.	ORIGINAL NO.
LQ-446	2	28	49	HS446	1004100131
LQ-222	1	35	96.8	HS222	0304100431
LQ-480	2	38	57	HS480	3024100031
LQ-236	1	38.03	105.6	HS236	0304102031
LQ-486	2	42	66.4	HS486	3174100031
LQ-259	1	45	118.1	HS259	0304102231
LQ-260	1	45	120.4	HS260	3044100031
LQ-272	1	48.05	125.8	HS272	3604100232
LQ-282	1	52	133	HS282	3354100031
LQ-284	1	53	135	HS284	3634100631
LQ-289	1	57.07	152	HS289	3874100031

FOR VOLVO

LIQUN No.	FIG	Dm/m	Lm/m	GKN No.	ORIGINAL NO.
LQ-194	1	23.82	61.3	HS194	1217606, 656762
LQ-150	1	23.82	61.3	HS150	762037
LQ-195	1	27	74.6	HS195	348472, 38403
LQ-166	1	27	81.78	HS166	231136, 231179
LQ-179	1	30.18	106.3	HS179	6652586, 38464
LQ-176	1	39.675	115.42	HS176	6652612, 6638385
LQ-380	3	44	126	HS255	232458, 231626
LQ-316	4	47.65	135	HS316	46240, 6621920
LQ-317	4	49.195	154.76	HS317	231009
LQ-381	3	50	152.6	HS381	2331519, 1651032
LQ-288	1	57.07	144	HS288	232540
LQ-289	3	57.07	152	HS289	1651229

FOR SCANIA

LIQUN No.	FIG	Dm/m	Lm/m	GKN No.	ORIGINAL NO.
LQ-239S	5	38	148	HS239S	294380
LQ-239T	6	38	148	HS239T	337058
LQ-244	1	39	127	HS244	169144, 550614
LQ-176	1	39.175	115.42	HS176	750610, 77187
LQ-380	3	44	126	HS380	550613, 750602
LQ-257	1	44	149	HS257	178258
LQ-316	3	47.62	134.9	HS316	78060
LQ-268S	5	48	161	HS268S	294383, 365913
LQ-268T	6	48.05	161	HS268T	337059, 365901
LQ-381	3	50	152.6	HS381	550613, 750613
LQ-280	1	50	164	HS280	207563, 264044
LQ-294385	1	57	161	294385	294385
LQ-292S	5	57	164	HS292S	390225, 366441
LQ-292T	6	57	164	HS292T	337060, 366137

PART No.	FIG	Dm/m	Om/m	Lm/m	GMB No.	GKN
5-10X	A	30.188		106.35	GU2050	HS179
5-100X	B	25.4	38.5		G5-100X	
5-101X	A	23.82		61.3	GU400	HS150
5-103X	B	23.83	35		G5-103X	HS410
5-111X	A	23.825		61.3		HS194
5-113X	A	27		81.78	G5-113X	
5-1200X	B	27	57.4		G5-1200X	
5-1201X	B	27/28.6	55.5		G5-1201X	
5-1203X	B	27	67.6		G5-1203X	
5-1204X	A/B	27/28.6	67.6	92		
5-12062X	A	48.05		161		HS268
5-12072X	A	57.05		162.9	5-12072X	
5-12100X	A	45		120.4	GU-7530	HS260
5-121X	A	27		81.75	G5-121X	
5-12213X	B	38	56		GU-7300	
5-12219X	A	48.05		125.8	GU7620	HS272
5-12276X	A	44.1		149		
5-12278X	A	50		164		HS280
5-12924X	A	52		133	GU7560	HS282
5-12932X	A	57.07		152	GU7630	HS289
5-1301X	B	31.3	71.5		G5-1301X	
5-1306X	B	27.4	50.9		G5-1306X	HS442
5-1306X-1	B	27.4	50.8		G5-1306X-1	HS442
5-1309X	B	28.6	63.96		G5-1309X	
5-13400X	A	23.825		61.3	5-111X	
5-134X	A	27		92/81.7	G5-134X	
5-1501X	B	25.02	40		GUN27	HS420
5-1502X	B	26	42		GUT13	HS432
5-1503X	B	25.02	39.8			
5-1505X	B	28.02	52.9		GUN29	HS448
5-1506X	B	38	56		GU7300	HS480
5-1508X	B	26	53.6		GUT12	HS436
5-1509X	A	28.52		77.7	GUT14	HS172
5-1510X	B	29	49		GUT17	HS454
5-1511X	B	32	61		GUT20	HS470
5-1514X	B	22.52	34			
5-1516X	A	25.02		76.44	GUM88	HS153
5-153X	A	27		81.78	GU1000	HS166
5-155X	A	34.93		126.22	G5-155X	HS275
5-160X	A	30.188		106.35	GU2050	HS179
5-160X-1	A	30.188		106.35		
5-165X	A	41.24		142	G5-165X	HS252
5-170X	B	23.83	35.13		G5-170X	HS410
5-178X	A	30.188		92.075	GU2200	HS182
5-188X	A	34.93		106.31	GU2300	HS263
5-200X	A	27		81.78	G5-200X	Hs166
5-212X	A/B	27.02/28.6	60.2	92	G5-212X	
5-213X	A	27		92	G5-213X	
5-248X	A/B	25.39/27	38.6	62		

PART No.	FIG	Dm/m	Om/m	Lm/m	GMB No.	GKN
5-251X	A	27			G5-251X	HS166
5-2532X	B	28.6	49	81.75		
5-260X	B	27	52.5		G5-260X	HS162
5-263X	A	34.93		106.31	G5-263X	HS263
5-273X	B	27	67.6		G5-273X	
5-275X	A	34.93		126.22	G5-275X	HS275
5-297X	B	30.2	52.5		G5-297X	HS457
5-297X-1	B	30.2	59.9		G5-297X-1	HS457
5-3011X	B	28.6	60.2			
5-3022X	A/B	27/28.6	60.2	81.78		
5-3147X	B	28.6	60.2		GU6370	HS451
5-350X	B	27	50.8/56.8			
5-353X	B	27/27.4			G5-353X	
5-431X	A	33.3		67.48	GGP-44R	
5-443X	A	27.01		61.95	G5-443X	
5-450X	A/B	27.01/27	52.5	81.78		
5-4X	A	27		74.6	GU1100	HS195
5-544X	A/B	28.6/27	60	81.4		
5-6106X-1	B	33.38	52.4			
5-74X	B	27			G5-260X	HS441
GU-200L	A	24		63.3		
GU-297	A	24.06		78.4		
GU-300	A	19.04		51.95		
GU-350	A	19.04		51.95		
GU-400	A	23.82		61.3		
GU-410	A	24		63.3		
GU500	A	23.82		61.3		
GU-500L	A	23.82		61.3		
GU-510	A	23.82		61.3		
GU-600	A	23.82		61.3		
GU-700	A	26.99		60.3		
GU-720	A	25		56.9		
GU-730	A	25		56.9		
GU-800	A	27		61.95		
GU-1000	A	27		81.75		
GU-1000L	A	27		81.75		
GU-1020	B	27	55.59			
GU-1100	A	27		74.6		
GU-1100L	A	27		74.6		
GU-1210	A	27		61.95		
GU-1210L	A	27		61.95		
GU-1550	A	34.92		126.1		
GU-1600	A	23		58.2		
GU-1650	A	22.03		58.8		
GU-1660	A	22.03		58.8		
GU-1670	A	24.06		62.4		
GU-1700	A	22		55.6		
GU-1700L	A	22		55.6		
GU-1710	B	24	44			

PART No.	FIG	Dm/m	Om/m	Lm/m	GMB No.	GKN
GU-1720	B	28	48			
GU-1730	A	23.82		62.4		
GU-1740	B	31	48.1			
GU-1760	A	22.06		67		
GU-1770	A	22.06		64		
GU-2000	A	30.18		106.3		
GU-2000L	A	30.18		106.3		
GU-2010	A	32		106.3		
GU-2050	A	30.18		106.3		
GU-2050L	A	30.18		106.3		
GU-2200	A	30.18		92.05		
GU-2200L	A	30.18		92.05		
GU-2210	B	30.18	64.91			
GU-2300	A	34.92		106.3		
GU-2500	B	31.25		50.05		
GU-2560	B	30	60			
GU-2560	B	31.25	75.4			
GU-2770	E	29.03		74.85		
GU-2800	E	29.03		104.5		
GU-2970	A	24.06		78.4		
GU-3000	A	39.69		115.95		
GU-3500	A	39.69		115.95		
GU-3500L	A	39.69		115.95		
GU-3800	E	44		126		
GU-3810	E	50		152		
GU-3820	E	50		152		
GU-3840	A	44		149		
GU-3850	A	39		127		
GU-3860	A	50		164		
GU-3870	A	44		149		
GU-3880	A	50		164		
GU-4000	E	47.62		134.855		
GU-4010	E	49		135		
GU-5000	E	49.2		154.74		
GU-5010	E	49		154.96		
GU-5950	B	25.4	39.6			
GU-5950L	B	25.4	33.34			
GU-5960	F	25.4		33.34		
GU-5970	F	25.4		33.34		
GU-5970L	F	25.4		33.32		
GU-6010	G	79.35		33.32		
GU-6100	F	25.4		33.34		
GU-6200	B	25.4	55.55			
GU-7000	B	28	42			
GU-7010	B	24	34.4			
GU-7010L	B	24	34.4			
GU7020	B	29	51.9			
GU7050	A	28.99		64		
GU-7060	A	28.98		75.46		
GU-7100	F	25.4		33		

PART No.	FIG	Dm/m	Om/m	Lm/m	GMB No.	GKN
GU-7100L	F	25.4		33		
GU-7150	B	25.4	38.8			
GU-7200	B	34	51.3			
GU-7280	B	28	49			
GU-7280/3	B	28	49			
GU-7280/4	A	24.06		74.4		
GU-7290	B	29.52	51.6			
GU-7300	B	38	56			
GU-7390	A	50		153.8		
GU-7410	A	26		69.8		
GU-7410L	A	26		69.8		
GU-7420	A	30		81.7		
GU-7430	A	35		96.8		
GU-7440	A	38.03		105.6		
GU-7460	A	44		124.85		
GU-7470	B	42	66			
GU-7490	A	45.04		118.1		
GU7530	A	45		120.4		
GU-7540	A	45.05		121.6		
GU-7560	A	52		133		
GU-7590	A	52		133		
GU-7610	A	53		135		
GU-7630	A	57.07		152		
GU-7800	A	22		59		
GU-7800L	A	22		59		
GU-7900	B	26.01	45.2			
GU-8100	A	47		131.1		
GU-8110	A	50		131		
GU-8130	A	57		144		
GU-9010	A	19.02		47.8		
GU-9810	A	42		116.4		

LIQUN No.	PRODUCT No.	D/mm	L/mm	适用车型
LQ01	LQ-0813	13	38	沙滩摩托车
LQ02	LQ-0914	14	39.5	沙滩摩托车
LQ03	LQ-1438	14	38	三轮摩托车
LQ04	SC7080	15	38.1	长安奥拓
LQ05	TJ110转	15	38	天津大发
LQ06	7RX	15.07	39.5	捷达
LQ07	F110	16	38.5	微型车
LQ08	XQ120转	16	40	五十铃
LQ09	BJ2021	16	41	北京吉普
LQ10	BJC213转	16	43	北京吉普
LQ11	LZ110转	17	44	柳州五菱
LQ12	EQ153转	18	47	东风转向机
LQ13	长江750	19	44	三轮摩托车
LQ14	NJ1030转	20	44	跃进
LQ15	LQ-2050	20	50	三轮摩托车
LQ16	WH110	20	55	松花江
LQ17	LZ110	20	55	柳州五菱
LQ18	TJ110	20	55	天津大发
LQ19	SC110	20	59.5	重庆长安
LQ20	昌河110	20	59.5	昌河
LQ21	JL110	22	59.6	吉林110
LQ22	TJ1010	22	57	天津大发
LQ23	BJ130差轴	22	136	北京130C
LQ24	EQ140转	24	63	东风解放
LQ25	CA150前桥差轴	24	168	九平柴
LQ26	CA6350	25	63	一汽佳宝
LQ27	CH1018A	25.017	64	长安新昌河
LQ28	LZ111	25.02	64	柳州五菱
LQ29	XJ213前转	27	52.5	吉普
LQ30	XJ213-3	27	81.72	
LQ31	CA150后桥差轴	28	187	解放
LQ32	EQ140差轴	28	188	东风
LQ33	CA-10差轴	28.025	195	解放
LQ34	SY6480	29	47.4	金杯
LQ35	五十铃	29	50	五十铃
LQ36	SY134	30	54.8	金杯
LQ37	BJ212	30	55	北京212
LQ38	JF1819	30	78	
LQ39	BJ1305	30	88	北京130
LQ40	BJ1305加强型	30	88	
Lq41	BJ2020S(B)前转	30.19	52.5	北京吉普
Lq42	BJ130C	32	93	北京130C
LQ43	CAG6120D差轴	32	204	解放
LQ44	WF6700	33	93	江淮
LQ45	NJ130	35	98	跃进
LQ46	T620	36	104	东风
LQ47	EQ140	39	118	东风
LQ48	CA141	39	118	新解放
Lq49	EQ140-2	39	118	东风

LIQUN No.	PRODUCT No.	D/mm	L/mm	适用车型
LQ50	CKL20DD	43	136	乘龙王
LQ51	FV413(后)	44	129	
LQ52	W50L/K后	45	126	东风
LQ53	EQ6D142	47	140	东风
LQ54	EQ153	47	140	解放
LQ55	CA150	48	124.6	解放
LQ56	CA1160K2	48	127	解放
LQ57	CA1160K2-1	48	127	黄河
LQ58	JN162	50	135	东风
LQ59	亚斯210	50	155	
LQ60	FV413(前)	52	153.85	斯太尔
LQ61	991.1431.0017(STR1)	48	116.4	斯太尔
LQ62	991.1431.0125(STR2)	52	133	斯太尔
LQ63	991.1431.0082(STR3)	57	144	斯太尔
LQ64	991.1431.0092(STR4)	57	152	红岩
LQ65	玛斯525KH	62	149	