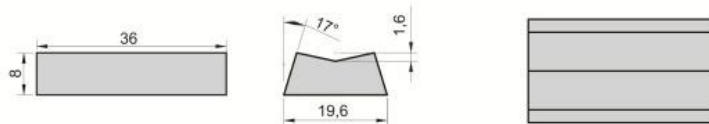


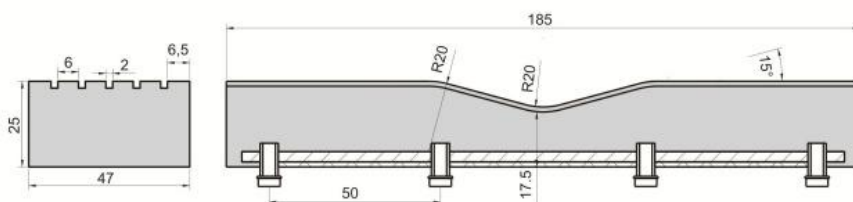
橡胶链

Roller chain with vulcanised elastomer profiles

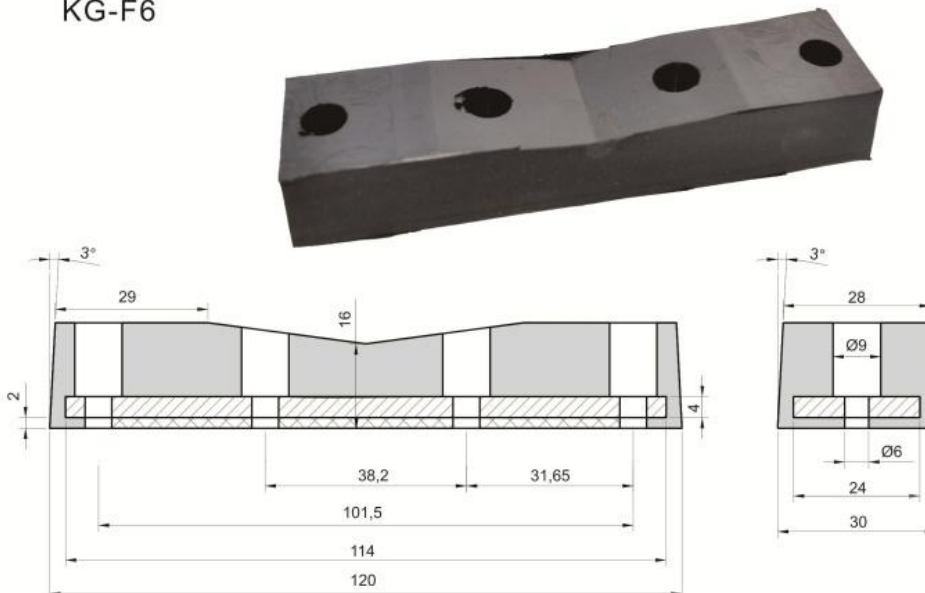
KG-F4



KG-F5



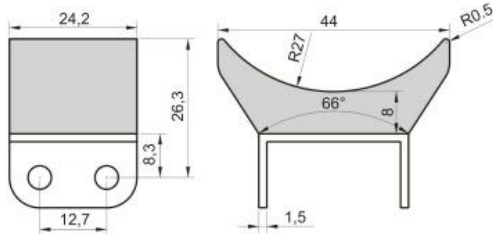
KG-F6



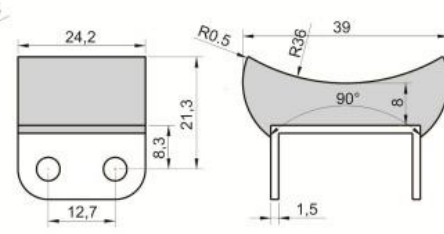
橡胶链

Roller chain with vulcanised elastomer profiles

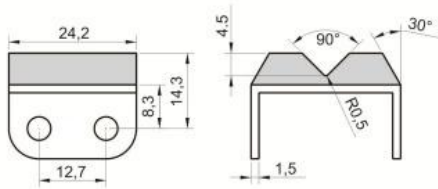
08B-G2F16



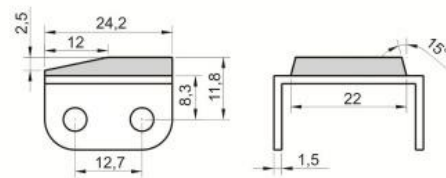
08B-G2F17



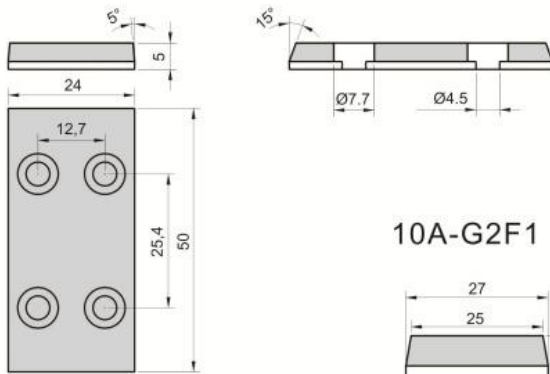
08B-G2F18



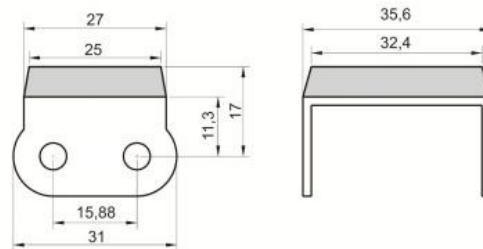
08B-G2F45



08B-WK2 F4



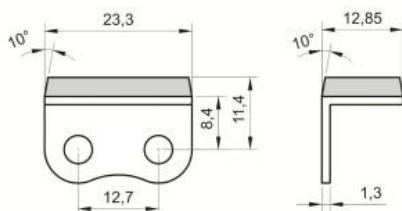
10A-G2F1



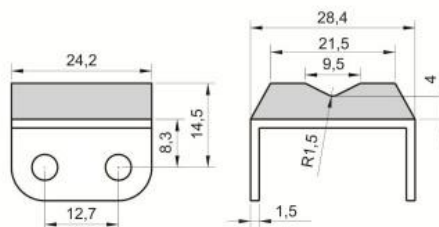
橡胶链

Roller chain with vulcanised elastomer profiles

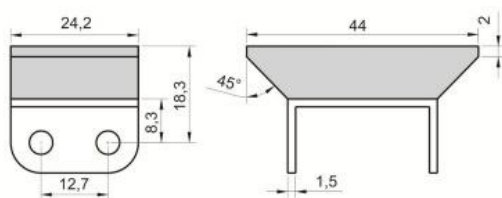
08B-G1F16



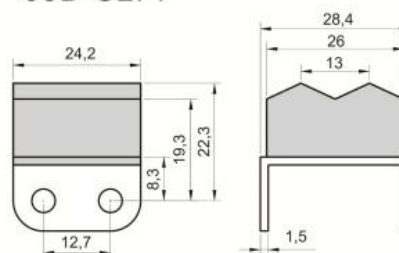
08B-G2F2



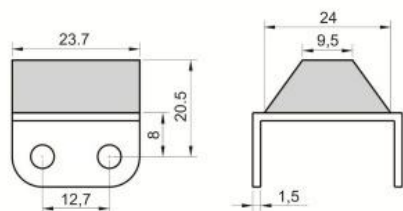
08B-G2F5



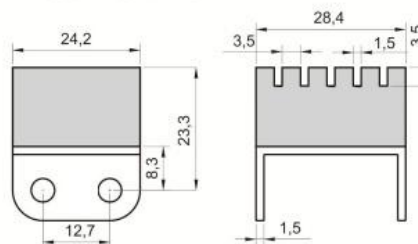
08B-G2F7



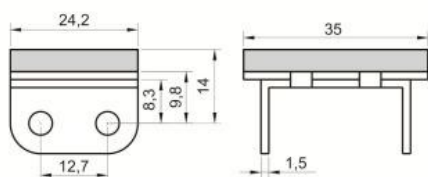
08B-G2F8



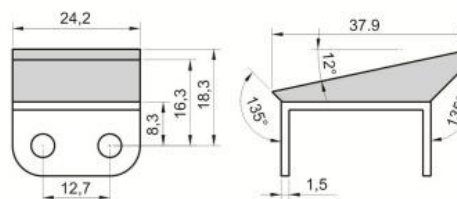
08B-G2F10



08B-G2F13



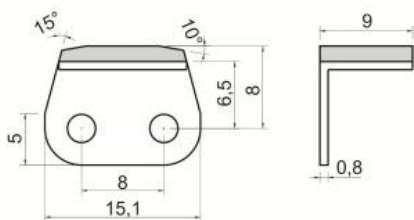
08B-G2F14



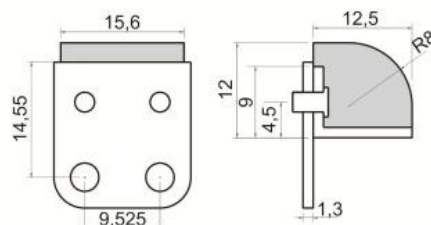
橡胶链

Roller chain with vulcanised elastomer profiles

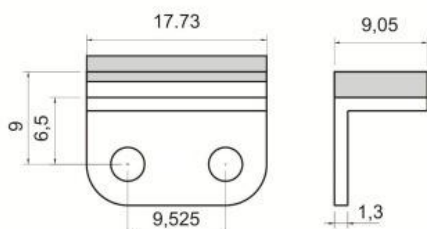
05B-G1



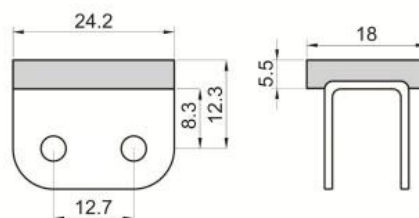
06CWSA2-G1F3



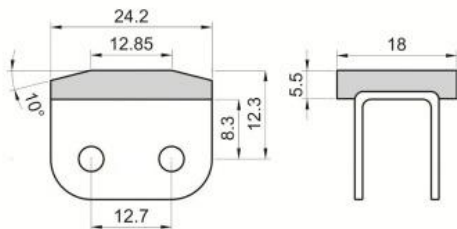
06B-G1 F9



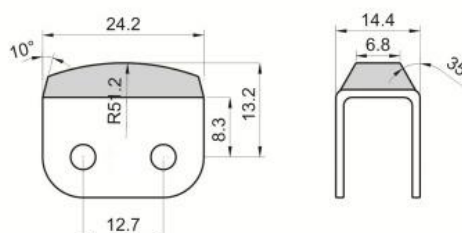
08B-G1F1



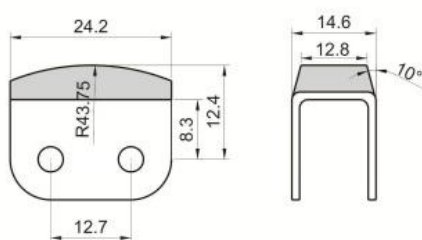
08B-G1F4



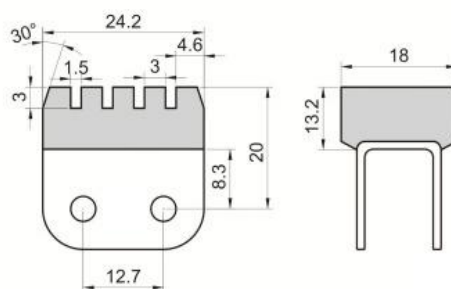
08B-G1F6



08B-G1F13

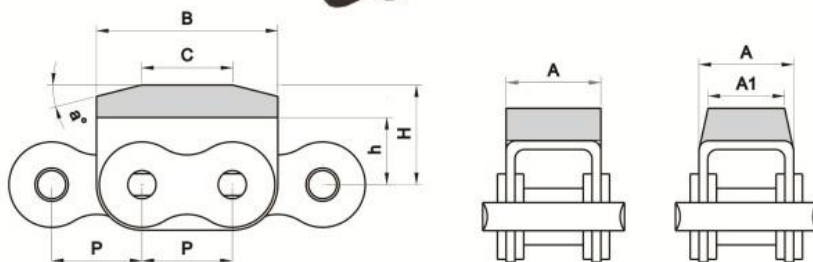


08B-G1F15

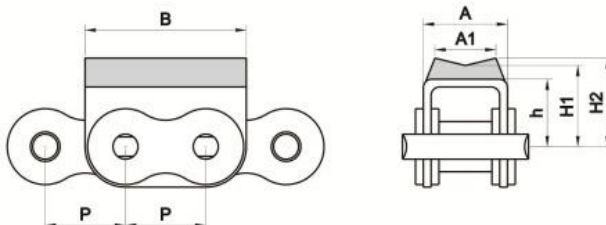


橡胶链

Roller chain with vulcanised elastomer profiles



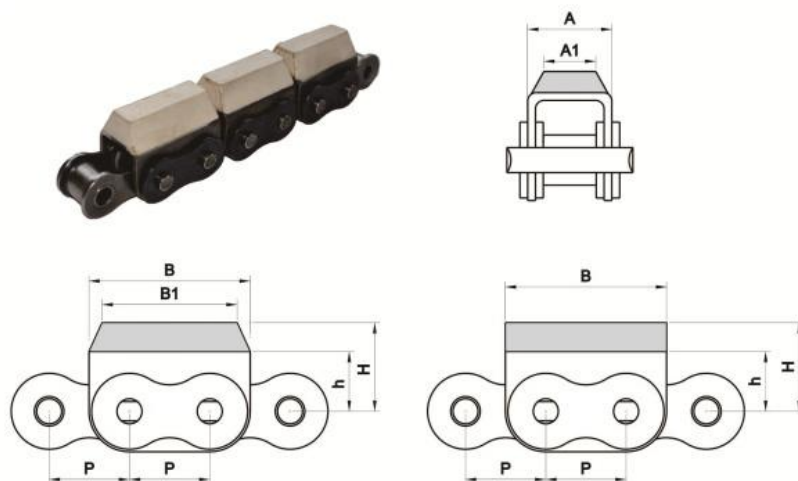
Chain No.	节距 Pitch	橡胶块尺寸 Plate and attachment size						
	P	A	A1	B	C	a	h	H
	mm	mm	mm	mm	mm	mm	mm	mm
08B-G2F1	12.7	28.4	25.4	24.2	9	9	8.3	12
08B-G2F15	12.7	28.4	25.4	24.2	9	15	8.3	12.8
12B-G2F20	19.05	39.1	34.5	37.2	14.3	15	12	16
C16AG1F7	25.4	27.5	26.4	49	25	15	16	21.4
16B-G1	25.4	29.05	-	49	25	15	15.4	21.4
16B-G1F11	25.4	29.05	-	49	41	15	15.4	21.4
C16B-G2	25.4	60.93	-	49	25	15	15.4	21.4
24B-G1F1	38.1	47	39.6	72.6	32.6	11	28	34



Chain No.	节距 Pitch	橡胶块尺寸 Plate and attachment size					
	P	A	A1	B	h	H1	H2
	mm	mm	mm	mm	mm	mm	mm
08B-G1F9	12.7	14.6	11	24.2	8.3	10.8	12.3
08B-G2F11	12.7	28.4	26.6	24.2	8.3	18.3	20.1
12B-G1F1	19.05	19.6	14.5	36	13	16	18
12B-G1F13	19.05	19.6	14.2	36	13	19.1	21
12B-G2F4	19.05	39.1	35	36	12	24.5	27.5
12B-G2F13	19.05	39.1	14.2	36	12	24.5	27.5

橡胶链

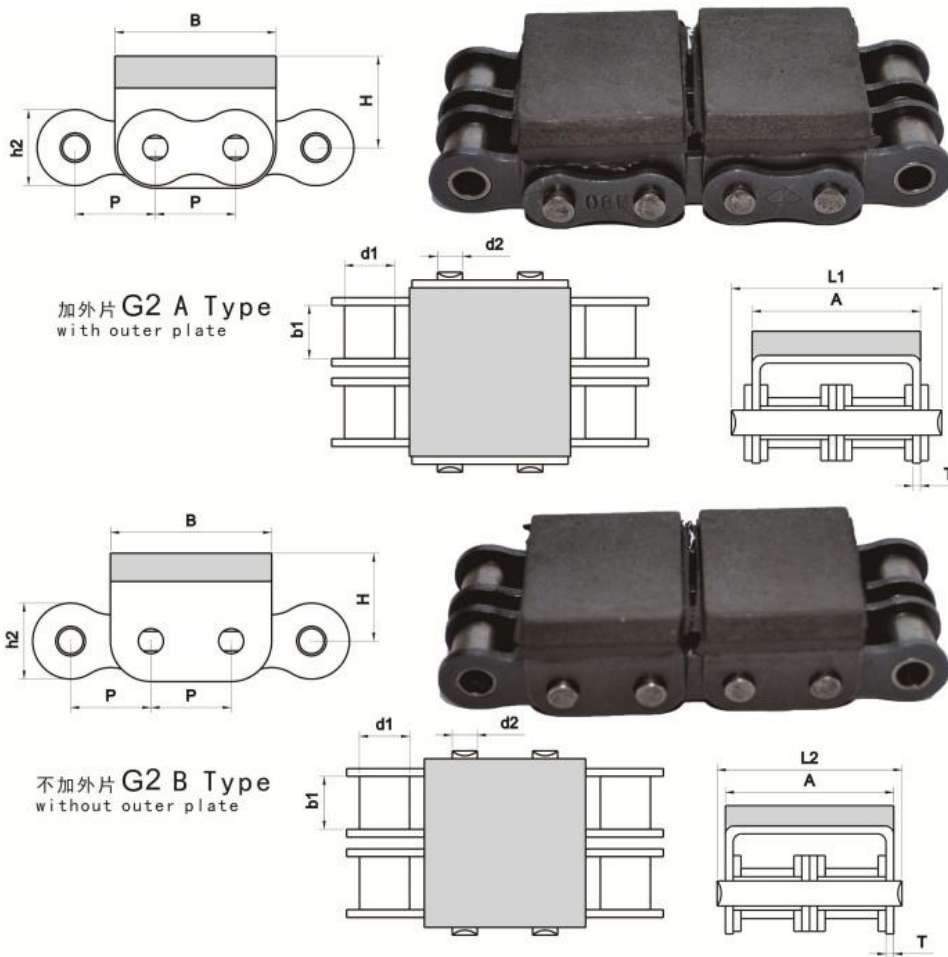
Roller chain with vulcanised elastomer profiles



Chain No.	节距 Pitch	橡胶块尺寸 Plate and attachment size					
	P	A	A1	B	B1	h	H
	mm	mm	mm	mm	mm	mm	mm
08B-G1F12	12.7	14.6	11.66	24.2	21.45	8.3	24
08B-G1F14	12.7	14.6	12	24.2	21.48	8.3	16
08B-G1F17	12.7	14.6	6.86	24.2	-	8.3	20.2
10B-G1F5	15.875	16.8	13.5	30	-	11.3	25.3
10B-G2F5	15.875	33.3	29.4	36	-	11.3	25.3
12A-G1F1	19.05	26	17	36	-	13	16
12B-G1F11	19.05	19.6	13.5	36	-	13	17
12B-G1F14	19.05	38.2	37.4	35	34.2	11.5	16
12B-G2F10	19.05	39.1	34	36	-	12	28
12B-G2F12	19.05	39.1	34.4	36	32.83	12	21
12B-G2F14	19.05	39.1	34	36	34	12	34
16A-G1F3	25.4	27.5	22	49	47.1	16	21.4
16A-G1F4	25.4	27.5	25.6	49.2	-	16	20
16B-G1F12	25.4	29.05	24.5	49	-	15.4	21.4
20A-G1	31.75	34	30	57.65	55.5	22	28
C20A-G1	31.75	34	30	61.75	59.63	22	28
C20B-G1	31.75	36	30	57	54.88	21	27
C20B-G2	31.75	73	60	58.15	56	21	27
24A-G1F1	38.1	55.5	50.4	70	66.2	24.5	46.5
C24B-G1	38.1	47	44	72.6	-	28	34

橡胶链

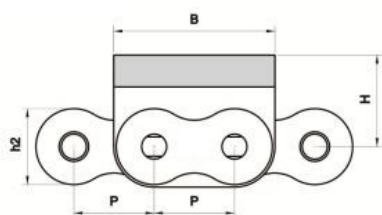
Roller chain with vulcanised elastomer profiles



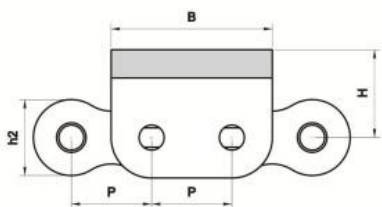
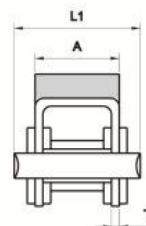
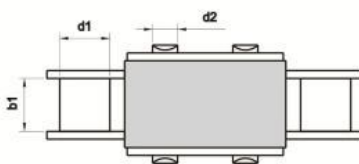
Chain No.	节距 Pitch P	滚珠直径 Roller diameter		内节内宽 Width between inner plates		销轴直径 Pin diameter		链片宽度 Plate depth		销轴长度 Pin length			橡胶块尺寸 Plate and attachment size			U板厚度 U plate thickness T	极限抗拉强度 Ultimate tensile strength Q _{min}	每米重量 Weight per meter q
		d1 max	d1 min	b1 min	b1 max	d2 max	d2 min	h2 max	h2 min	L1 max	L1 min	L2 max	L2 min	A	B			
08B-G2	12.7	8.51	7.75	4.45	11.8	34	31.2	28.4	24.2	12.3	1.5	32/7273	2.07					
10A-G2	15.875	10.16	9.4	5.08	15	41.8	37.8	36	30	17	2	42.3/9822	2.72					
10B-G2	15.875	10.16	9.65	5.08	14.7	38.4	35.4	33.3	30	16	1.5	44.5/10114	2.56					
12A-G2	19.05	11.91	12.57	5.94	16	51	46.1	44.5	36	17	1.85	55.3/12136	3.31					
12B-G2	19.05	12.07	11.68	5.72	16	46.6	42.9	39.1	36	16	1.85	57.8/13136	3.21					
16A-G2	25.4	15.88	15.75	7.92	24	66.7	60.2	57.2	46	20	2.42	115/30124	7.27					
16B-G2	25.4	15.88	17.02	8.28	21	73.2	67	60.93	49	22	1.5	106/26094	7.35					

橡胶链

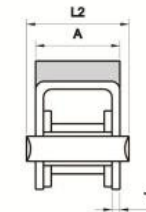
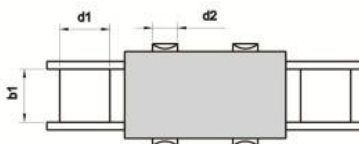
Roller chain with vulcanised elastomer profiles



加外片 G1 A Type
with outer plate



不加外片 G1 B Type
without outer plate



Chain No.	节距 Pitch P	滚珠直径 Roller diameter		内节内宽 Width between inner plates		销轴直径 Pin diameter		链片宽度 Plate depth		销轴长度 Pin length		橡胶块尺寸 Plate and attachment size			U板厚度 U plate thickness T	极限抗拉强度 Ultimate tensile strength Q min	每米重量 Weight per meter q
		d1 max	b1 min	d2 max	h2 max	L1 max	L2 max	A	B	H							
		mm	mm	mm	mm	mm	mm	mm	mm	mm	mm	mm					
08B-G1	12.7	8.51	7.75	4.45	11.8	19.4	16.4	14.6	24.2	12.3	1.5	18/4091	1.19				
10A-G1	15.875	10.16	9.4	5.08	15	24	21	17.5	30	17	1.5	21.8/4953	1.7				
10B-G1	15.875	10.16	9.65	5.08	14.7	23	19.5	16.8	30	17	1.5	19/4318	1.62				
12A-G1	19.05	11.91	12.57	5.94	18	32	27.2	21.4	36	17	1.85	31.8/7153	2.55				
12B-G1	19.05	12.07	11.68	5.72	16	26	22.3	19.6	36	17	1.85	57.8/13136	3.21				
16A-G1	25.4	15.88	15.75	7.92	24	37.2	30.8	27.5	46	20	2.42	42/9545	3.97				
16B-G1	25.4	15.88	17.02	8.28	21	41	34.8	29.05	49	20	1.5	58/13047	3.83				
20A-G1	31.75	19.05	18.9	9.53	30	46.8	40.8	34	57.6	28	3.1	86.7/19503	6.15				
20B-G1	31.75	19.05	19.56	10.19	26.4	48	41	36	57	27	3.5	85/19318	6.19				
24A-G1	38.1	22.23	25.22	11.1	35.7	58.3	50.3	46	75.2	35	4	127/28864	10.7				
24B-G1	38.1	25.4	25.4	14.63	33.2	61.6	52	47	72.6	34	4.5	160/36363	11.25				